



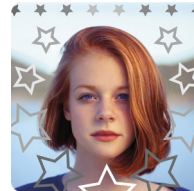
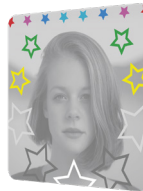
LivePortrait

An exceptional blend of brand protection and brand enhancement



Nanotech's LivePortrait™ brings together high-fidelity images with striking visual elements to create a memorable and enduring visual experience. It displays images far beyond conventional print resolution and allows for text and other design elements to be added for additional brand impact and authentication. This product is ideal for showcasing an endorsement model or a high-fidelity product image.

TILT LEFT AND RIGHT TO AUTHENTICATE $\pm 35^\circ$



UNPRECEDENTED
RESOLUTION

Rich, deep colours with striking product or portrait imagery.



EXTENSIVE DESIGN
OPTIONS

Beautiful imagery supported by the ability to embed visible and/or hidden security elements.



FLEXIBLE FORM
FACTOR

A range of sizes and shapes at a thickness that is virtually indistinguishable from the surface it is applied to.



SECURE

Cannot be captured or duplicated with comparable quality.

VISUAL DESIGN FEATURES:

Custom Designs Available	✓
Full RGB Colour Palette	✓
On / Off Capability	✓
Appear / Disappear Capability	✓
3D / Depth	✓
Overprinting of Text and Logos	✓
Laser Etching	✓
Intaglio Printing	✓

SECURITY OPTIONS:

QR Codes	✓
Serialization	✓
Microtext	✓
Tamper Evident	✓

APPLICATION FORMAT:

Shape & Size	Flexible
Plain Foil	23-50 microns thick
PSA Labels / Stickers	36-50 microns thick

USAGE:

Product Authentication - visual and covert product authentication for security labels, tapes, and seals

Consumer Goods Packaging - labeling for rigid product packaging in both retail and grocery settings

CONTACT US: +1.604.678.5775